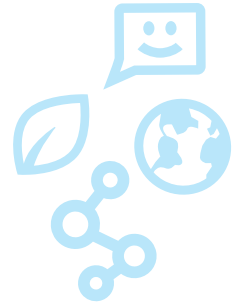


Braskem Inspire[®] 6000



Providing a distinctive balance of performance and sustainability with a simplified resin management solution



Inventory Management Simplification

The Inspire 6000 series allows thermoformers to utilize a single resin for a wide-range of applications that require varying levels of stiffness, clarity or impact creating a simplified inventory approach.

- Single grade inventory
- Reduced storage complexity
- Simpler order processing eliminating incorrect ordering/receiving
- Blends well with other resins



Performance Enhancements

In thermoforming applications, Inspire 6000 resins supply a balance of performance characteristics:

- Increased melt strength resulting in more uniform wall-thickness distribution
 - Opportunities for down-gauging
 - Potential to decrease part weight for source reduction
- Improved impact properties
- Outstanding stiffness, providing increased top load properties
- Excellent clarity levels
- Exceptional aesthetics and color
- Performance consistency across applications
- No additional investment in machinery
- FDA compliant

Sustainability: Environmental Benefits

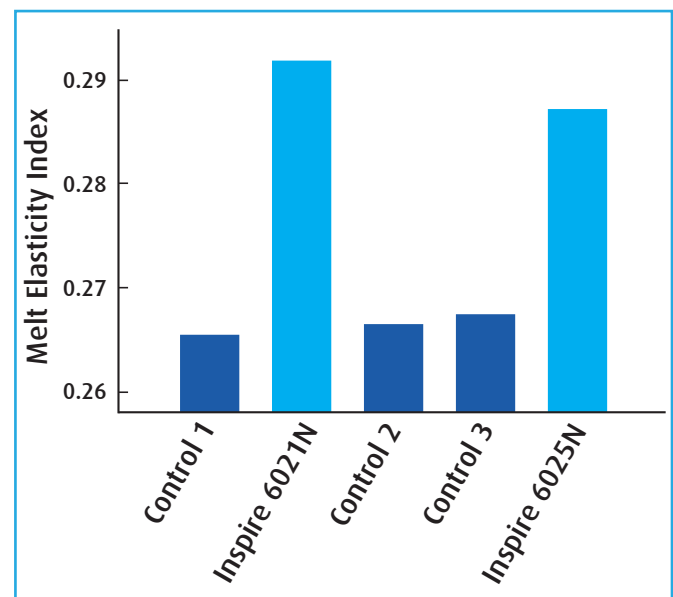
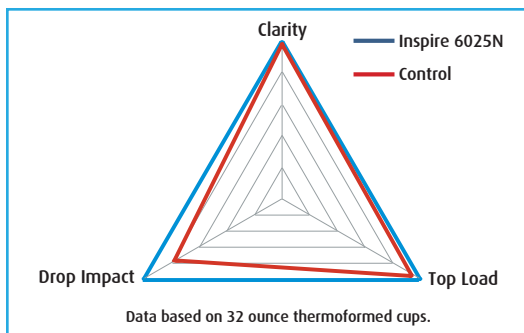
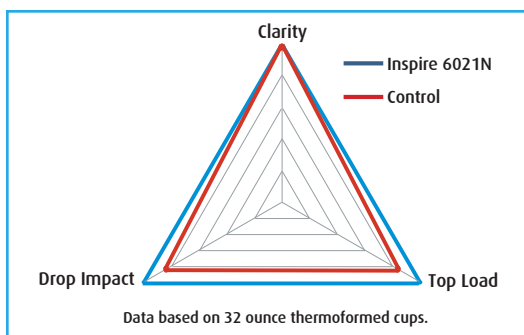
Inspire 6000 resins allow its users to save energy, comply with global regulatory standards and limit its carbon footprint.

- REACH compliant
- Potential for energy reduction
- Recyclable materials

Braskem Inspire[®]

Braskem Inspire® 6000

Properties	Inspire 6021N	Inspire 6025N
Melt Flow (G/10 min)	2.0	2.5
Tensile Strength at Yield (psi)	5410	5760
Flex Modulus (psi)	255,000	300,000
Izod Impact (ft - lbs/in)	0.60	0.70
Haze on 50 mil Disk (%)	26.6	27.8
Yellowness Index (YI)	-9.5	-8



Higher melt strength will translate to more stable drawing during the thermoforming process and also result in a more uniform wall thickness distribution in the final part.

USA Locations

Headquarters:

- Philadelphia, PA

Innovation & Technology Center:

- Pittsburgh, PA

Manufacturing Units:

- Marcus Hook, PA
- Neal, WV
- Oyster Creek, TX
- La Porte, TX
- Seadrift, TX

This brochure is intended solely for informational purposes only. The statements, technical information and recommendations contained herein are believed to be accurate based on information available as of the date hereof. Braskem makes no representations as to the completeness of the information contained herein and assumes no responsibility to update, revise or amend the statements, technical information, and recommendations contained herein. Because the conditions and methods of use of the product and of the information contained herein are beyond its control, Braskem expressly disclaims any and all liability as to any results obtained or arising from any use of the product or reliance on such information. Determination of the suitability and fitness of the product described herein for use is the sole responsibility of a potential buyer. NO WARRANTY OF FITNESS FOR ANY PARTICULAR PURPOSE, WARRANTY OF MERCHANTABILITY, OR ANY OTHER WARRANTY, EXPRESS OR IMPLIED, IS MADE CONCERNING THE PRODUCT DESCRIBED OR THE INFORMATION PROVIDED HEREIN. The information provided herein relates only to the specific product designated and may not be applicable when such product is used in combination with other materials or in any process. The user should thoroughly test any application before commercialization. Nothing contained herein constitutes a license to practice under any patent and it should not be construed as an inducement to infringe any patent and a potential buyer is advised to take appropriate steps to be sure that any proposed use of the product will not result in patent infringement. ©2014 Braskem America Inc. All rights reserved.

Scan here
and learn
more about
Braskem



1735 Market Street, 28th Floor • Philadelphia, PA 19103
tel 1 215 841 3100 • www.braskem.com