

## Reiser Inc.

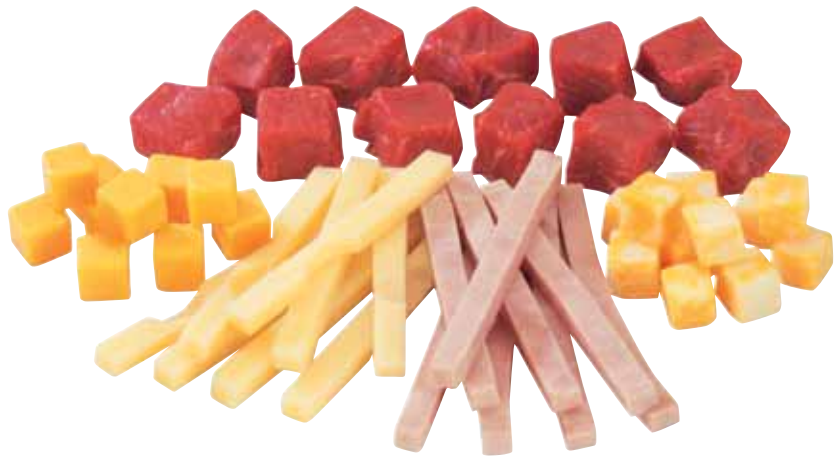
Cheese cutters and packagers generally start with barrels, and blocks of cheese, the most common being 40-lb blocks. Turning those large units into chunks, cubes and shreds that are manageable at retail, and offer a convenience value to consumers is not an easy task, but the Holac line, offered in the U.S. by Reiser Inc., has a new machine that can turn a 40-lb block into cubes, shreds or other cut pieces almost effortlessly.

The AUT 200 is the largest cheese-cutting machine in the Holac range. It combines high performance and flexible use. The innovative infeed with the top-press system enables this machine to process full 40-lb blocks, loose products and slicer offcuts.

With standard equipment, blocks are first cut with static knife assemblies before being fed into a shredder.

The AUT 200 is the largest most advanced machine from Holac, which is one of several partner companies under the Reiser umbrella. The AUT 200 has been on the show circuit during the last year being demonstrated at several food processing trade shows in both Europe and in North America.

Reiser has been selling and servicing high-quality food processing and packaging equipment for nearly 50 years. Reiser



equipment can be found in food production plants worldwide performing many applications in a variety of industries including – meat, seafood, produce, bakery and cheese.

The packaging product line ranges from tray sealing, vacuum and form/fill/seal packaging equipment as well as processing machines used for stuffing, portioning, grinding, injecting, extruding and slicing. Equipment is used as stand-alone machines or as complete systems. Their versatile design allows any piece of equipment to easily adapt to any size operation.

### Packaging for cheese

Also of interest to cheesemakers and other dairy processors is Reiser's Repak line of form-fill-seal equipment.

Repak horizontal form, fill, seal packaging machines offer the food industry a new generation of packaging equipment – from a more sanitary design to the highest cycle speeds in the industry. Repak packaging machines are constructed of stainless steel for a more reliable, heavy-duty machine designed for complete wash downs. Only Repak machines are constructed with two 4-point lifting stations, which can generate up to five metric tons of closing pressure for reliable sealing and more uniform forming. Repak's rapid air forming system allows the use of thinner films while maintaining thickness in package corners which results in up to 20% cost savings in packaging materials. Complete with user-friendly touch screen, the programmable and fault-finding diagnostic software

guarantees easy operation. No matter how complicated your package, Repak will produce it perfectly.

The RE 25 offers modular construction for a growing plant environment. It can be lengthened, components can be added and web widths can be subsequently changed if required. It stands out due to its high packaging performance even when creating shaped, rigid or sophisticated packages.

The Supervac line provides vacuum pack solutions with applications for cheese. And Ross Industries, another Reiser company provides modified environment tray pack solutions that have some applications for cheese.

### Sausage machines, and beyond

"We started out selling sausage machines," says company president Roger Reiser. "But fairly quickly we learned that a sausage machine is really a pump that has all kinds of applications."

Much of Reiser's business is still centered around standard meat applications for the Vemag line, an outgrowth of the early sausage making machines. The Vemag line has evolved to offer many applications in meat, bakery and prepared foods.

Today Reiser offers equipment that can cut cheese slices and precisely, automatically place them into prepared food applications like sandwiches.





**holac**®

Machines designed with multiple lanes provide significant increases in efficiency and throughput. New engineering advancements result in machines that feature remote diagnostics, and lend themselves to predictive maintenance, and minimal changeover and maintenance times.

John McIsaac, v.p of strategic business development says Reiser uses SolidWorks design software and partners with robotics vendors to provide customized automation solutions.

Reiser also puts a primary emphasis on customer service. It maintains parts and service capabilities for all of the machine lines in its portfolio, and provides fast personal service for parts replacement, and troubleshooting.

This year Reiser will break ground on an expanded customer R&D facility at its global headquarters in Canton, Mass. The new facility will allow the company to expand its capability for working with customers to develop particular solutions to their needs.

Reiser's business is well established in both Europe and North America and it has recently formed a partnership that gives it a significant presence in Eastern Europe.

Holac GmbH, is a globally recognized leader in the cutting-technology industry. For more than 40 years, Holac has been providing solutions to cut meat, meat products, cheese, fish and vegetables.

The Holac brand stands for unsurpassed precision, reliability and quality. With its experience and creativity in developing machines it has maintained a dominant position in the global market. The company's strategy is to focus firmly on our core area: cutting technology for foodstuffs.

Holac's sole production location and headquarters are in Heidenheim, Germany.

Reiser has been a representative for Holac in the U.S. since 1971. Reiser purchased a majority interest in Holac in 2001.

Repak is located in the Netherlands. The company's business philosophy reflects the aims and success of its customers. Repak works to create high quality solutions to increase profitability. As market trends come and go and consumer behavior changes, Repak is dedicated to continued development of innovative packaging solutions. The company continuously aims for new innovations, which maintain the momentum of growth of the packaging market.

Today's market activity demands the highest level of productivity. Repak machines offer the highest levels of reliability and flexibility to ensure maximum production. Many years of experience, engineering expertise, progressive thinking, superior service and an awareness of costs are the cornerstones of Repak's business. As a specialist in form-fill-seal machinery and an innovator in new forming technology, Repak offers form-fill-seal machinery for the next generation, providing machines designed for more efficient service, maintenance and reduced film usage. With new ideas, new molds and techniques Repak offers the support customers need to ensure your business success in the future.

**Reiser Inc.**  
www.reiser.com  
781/821-1290

