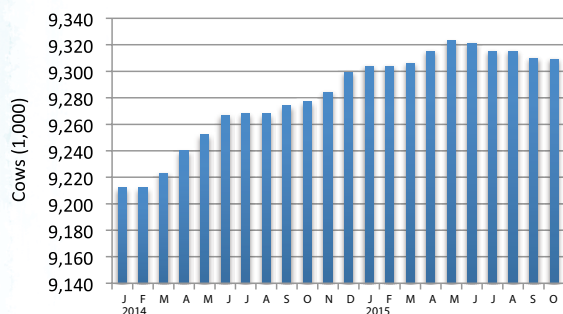


A quick look at the producing side of dairy

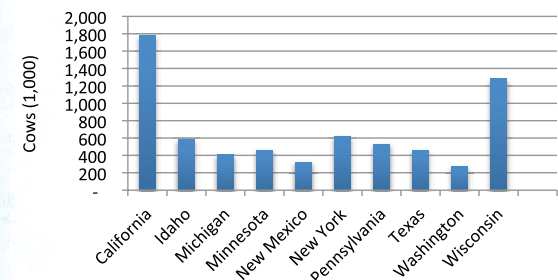
More than 9 million dairy cows produce milk for the dairy processing industry. The average cow produces 22,000 pounds per year, with an average fat content of 3.77%.

Dairy farmers added cows since 2014



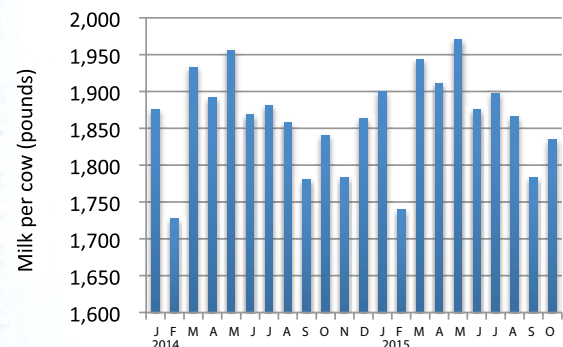
Source: USDA, National Agricultural Statistics Service

The Top 10 states with dairy cows



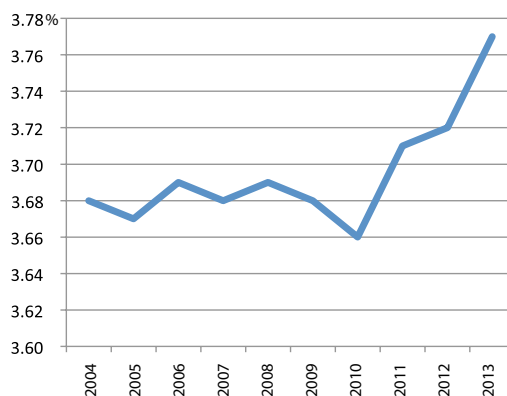
Source: USDA, National Agricultural Statistics Service

Milk production per cow shows seasonal variations



Source: USDA, National Agricultural Statistics Service

Cows are producing more fat (average production)



Source: Council on Dairy Cattle Breeding

Producers' daily deliveries rise

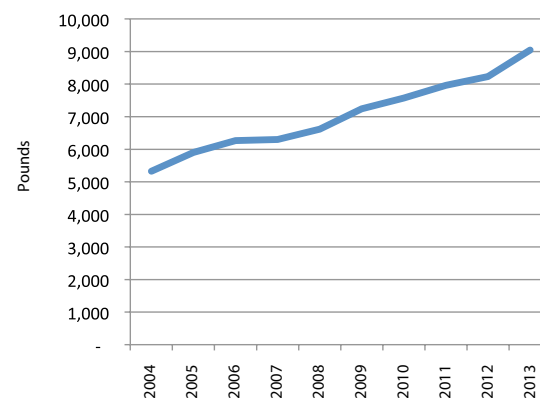


Photo courtesy of Vito Palmisano